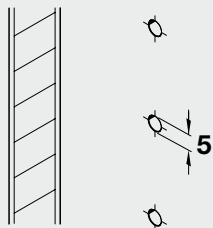


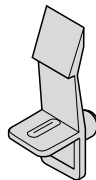
Plastic Shelf Supports



For inserting in system holes:



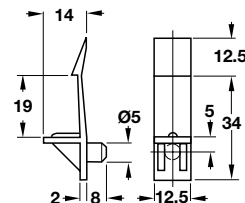
Shelf support Ø 5 mm
with grooved plug and spring clip, for
wood shelves **19 mm (3/4")** thick



Finish: plastic

Cat. No.	beige	282.17.432
	white	282.17.736

Packing: 5000 pcs.



Connectors and Shelf Supports

Mounting screws:

Hospa particle board screws
countersunk head with
Pozi drive #2 cross slots
Finish:
steel, galvanized

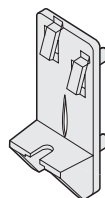


length	Cat. No.
13 mm	015.31.522
15 mm	015.31.531
17 mm	015.31.540

Packing: 1000 pcs.

Screw-mounted with additional
shelf attachment.

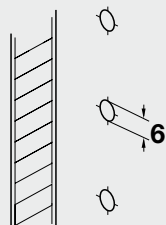
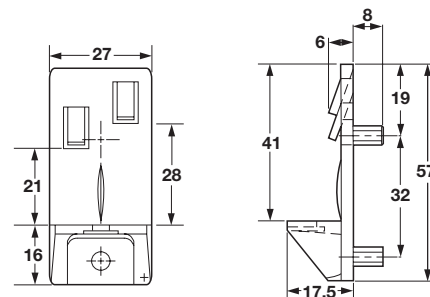
Shelf support heavy duty
double pin Ø 5 mm for 32 mm system
locks 3/4" or 1" shelves



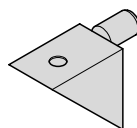
Finish: plastic

Cat. No.	white	282.47.702
	transparent	282.47.402

Packing: 1250 pcs.



Shelf support Ø 5 mm
with additional screw-mounting
possibility on shelf and side panel
Finish: plastic, brown



Cat. No.	283.50.101
----------	------------

Packing: 1000 pcs.

