

# FR 5210.ECD

<b>SLIDE TYPE:</b>	Heavy-Duty Full-Extension Ball Bearing Drawer Slide - with Easy Close Device
<b>MOUNTING:</b>	Side Mount

<b>WIDTH:</b>	12.9 mm (0.51 in.)
<b>LOAD CAPACITY:</b>	dynamic up to 90 kg (200 lbs.)

**New Product**  
Please inquire for lead time

**ECD**



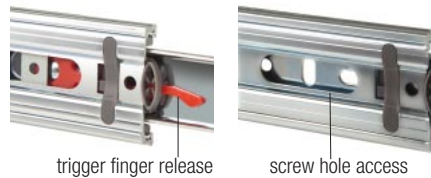
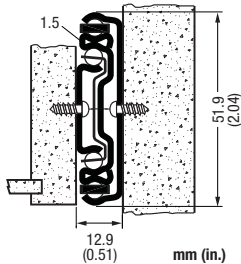
ECD mechanism provides self-closing and impact absorbing soft-close feature.

Rear, front and bottom mounting brackets are available. See the brackets page.

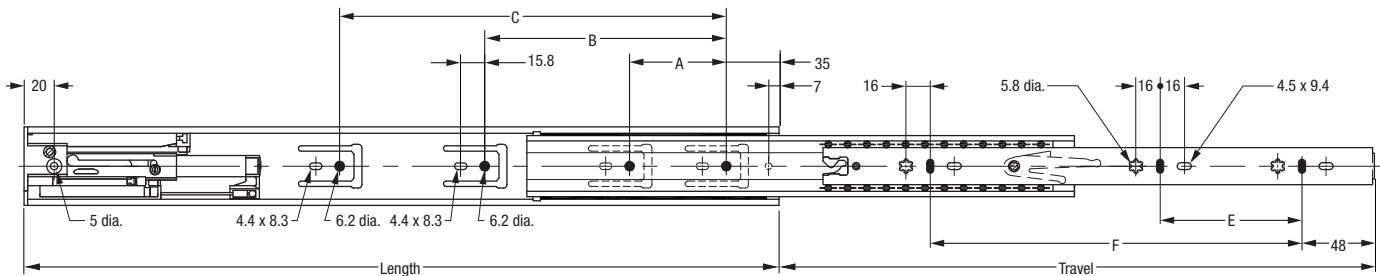
<b>MATERIAL:</b>	cold rolled steel
------------------	-------------------

<b>FEATURES:</b>	steel ball bearings
------------------	---------------------

<b>SPECIFICATIONS:</b>	<ul style="list-style-type: none"> <li>▶ precision ball bearing drawer slide for heavy-duty applications in office furniture, architectural millwork and institutional applications</li> <li>▶ drawer profile features an easy to operate disconnect finger release trigger</li> <li>▶ system 32 compatible hole locations</li> <li>▶ drawer slide is non-handed, and has a hold-close detent</li> <li>▶ over-extension of 25mm (1 in.) is standard</li> <li>▶ new ECD Easy Close Device</li> </ul>
------------------------	-----------------------------------------------------------------------------------------------------------------------------------------------------------------------------------------------------------------------------------------------------------------------------------------------------------------------------------------------------------------------------------------------------------------------------------------------------------------------------------------------------



12.9 mm (0.51 in.) is the actual size of the slide. Allow a min. of 13 mm (0.51 in.) for clearance and a maximum of 13.5 mm (0.53 in.).



Length	Travel	Cabinet Profile:			Drawer Profile:		Weight	Order No.			
		A	B	C	E	F					
mm	in	mm	in	mm	in	mm	in	kg.	zinc		
400	15.75	64	2.52	160	6.30	96	3.78	288	11.34	*	*
450	17.72	64	2.52	224	8.82	128	5.04	320	12.60	*	*
500	19.69	64	2.52	256	10.18	128	5.04	352	13.86	*	*
550	21.65	64	2.52	224	8.82	320	6.30	416	16.38	*	*
600	23.62	64	2.52	224	8.82	352	7.56	448	17.64	*	*
650	25.59	64	2.52	224	8.82	416	7.56	512	20.16	*	*
700	27.56	64	2.52	224	8.82	416	8.82	544	21.42	*	*
Packing Unit: 10 pair per box									* on request		