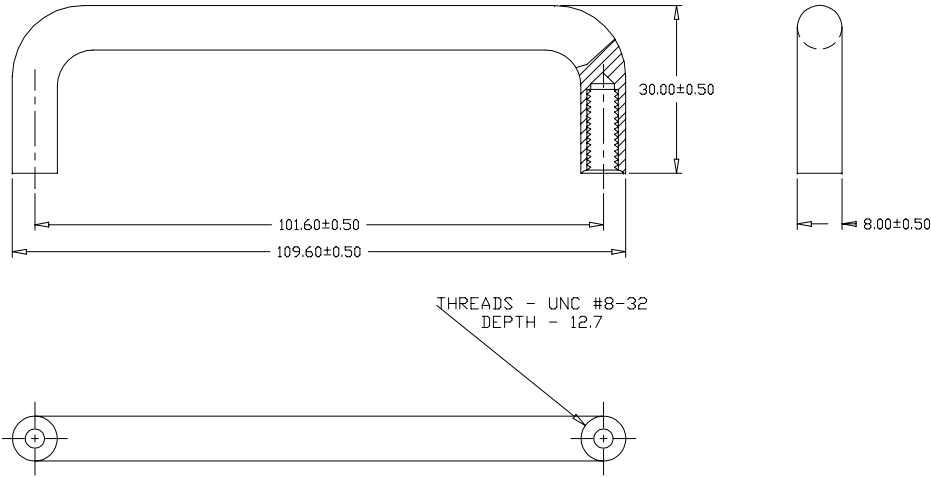


REVISIONS			
REV	DESCRIPTION	DATE	APPROVED
A	Revision #09-1600	1/23/09	K. Hamilton




**STANDARD STAINLESS
STEEL WIRE PULL**

NOTE: Proprietary Rights are included in the information disclosed herein. This information is submitted in confidence and neither this document nor the information disclosed herein shall be reproduced or transferred to other documents or used to disclose to others for manufacturing or any other purposes except as specifically authorized in writing by Wind Corporation.

NOTES:

- 1) NO SHARP EDGES.
- 2) PACK 1 HANDLE AND 1 BAG OF 2 (#8-32-1" PHILLIPS HEAD) SCREWS IN A SEALED BAG. 25 BAGS IN AN INNER CARTON, 10 INNER CARTONS PER EXPORT CARTON.
- 3) LIGHT BRUSH AND VIBRATED FINISH AS PER SAMPLE.
- 4) EXPORT CARTON MARKINGS AS PER DOCUMENT NUMBER "PCK101."

		Tolerance unless otherwise specified:		DRAWING TITLE	
		Decimal: ± .005" ± .13mm		SS Wire Pull	
		Fractions: ± 1/64"			
		Angles: ± 1°			
		DRAWN BY: KGH		DATE: 01/09/09	
MATERIAL: Stainless Steel		SIZE: A		DWG NO. 97186	
FINISH: See Note #3		SCALE: 1:1		REV: A	
				REV DATE: 1/23/09	
				SHEET 1 OF 1	