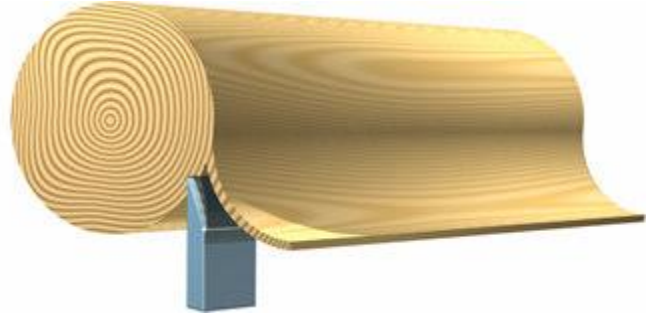




## Rotary Cut

The log is centered on a lathe and turned against a broad cutting knife set into the log at a slight angle.



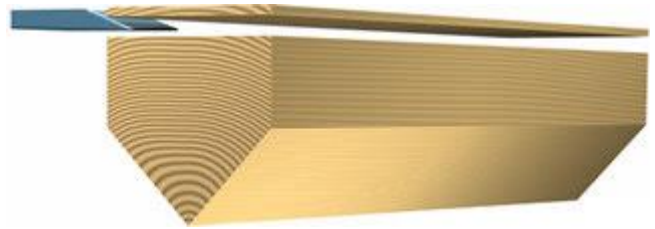
## Quarter Slicing

The slicing is made perpendicular to the annual growth rings of the tree. This creates a straight grain appearance.



## Plain Slicing

By slicing parallel to the center of the log, a raised "cathedral effect" is formed by the innermost growth rings.



## Rift Cut

This straight grain cut is derived by slicing red and white oak at a slight angle to minimize the irregularities in the wood.

